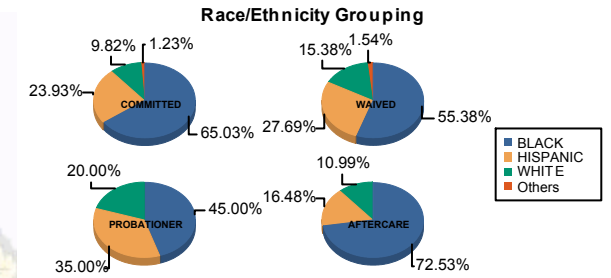




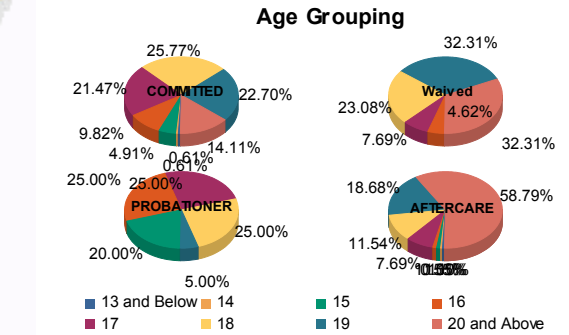
Juvenile Demographics and Statistics

Race/ Ethnicity	COMMITTED				WAIVED				PROBATIONER		AFTERCARE				Total	
	MALE	FEMALE	MALE	FEMALE	MALE	FEMALE	MALE	FEMALE	MALE	FEMALE	MALE	FEMALE	MALE	FEMALE		
BLACK	100	64.52%	6	75.00%	35	54.69%	1	100.00%	9	45.00%	127	73.84%	5	50.00%	283	65.81%
HISPANIC	38	24.52%	1	12.50%	18	28.13%	0	0.00%	7	35.00%	29	16.86%	1	10.00%	94	21.86%
WHITE	15	9.68%	1	12.50%	10	15.63%	0	0.00%	4	20.00%	16	9.30%	4	40.00%	50	11.63%
Others	2	1.29%	0	0.00%	1	1.56%	0	0.00%	0	0.00%	0	0.00%	0	0.00%	3	0.70%
Total	155	100.00%	8	100.00%	64	100.00%	1	100.00%	20	100.00%	172	100.00%	10	100.00%	430	100.00%



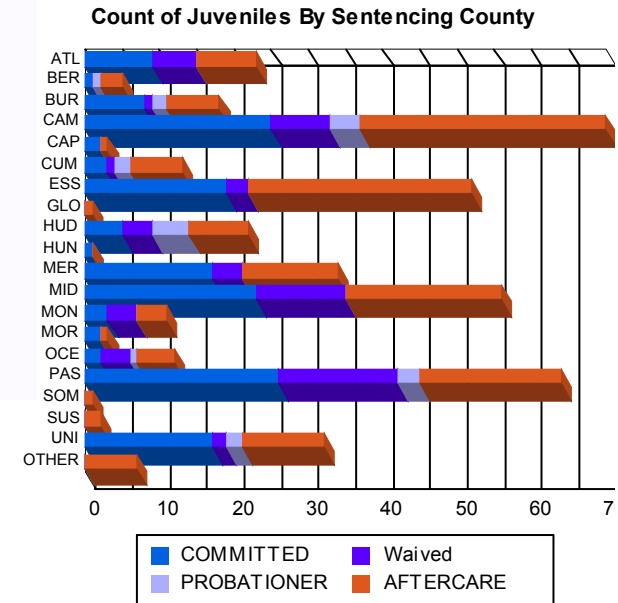
Age

13 and Below	1	0.65%	0	0.00%	0	0.00%	0	0.00%	0	0.00%	1	0.58%	0	0.00%	2	0.47%
14	1	0.65%	0	0.00%	0	0.00%	0	0.00%	0	0.00%	0	0.00%	1	10.00%	2	0.47%
15	7	4.52%	1	12.50%	0	0.00%	0	0.00%	4	20.00%	2	1.16%	0	0.00%	14	3.26%
16	16	10.32%	0	0.00%	3	4.69%	0	0.00%	5	25.00%	2	1.16%	0	0.00%	26	6.05%
17	32	20.65%	3	37.50%	5	7.81%	0	0.00%	5	25.00%	13	7.56%	1	10.00%	59	13.72%
18	40	25.81%	2	25.00%	15	23.44%	0	0.00%	5	25.00%	19	11.05%	2	20.00%	83	19.30%
19	37	23.87%	0	0.00%	21	32.81%	0	0.00%	1	5.00%	34	19.77%	0	0.00%	93	21.63%
20 and Above	21	13.55%	2	25.00%	20	31.25%	1	100.00%	0	0.00%	101	58.72%	6	60.00%	151	35.12%
Total	155	100.00%	8	100.00%	64	100.00%	1	100.00%	20	100.00%	172	100.00%	10	100.00%	430	100.00%
Average Age	18.06		17.75		18.97		20.00		16.70		20.29		19.90		19.07	



Sentencing County

ATL	9	5.81%	0	0.00%	6	9.38%	0	0.00%	0	0.00%	7	4.07%	1	10.00%	23	5.35%
BER	1	0.65%	0	0.00%	0	0.00%	0	0.00%	1	5.00%	3	1.74%	0	0.00%	5	1.16%
BUR	7	4.52%	1	12.50%	1	1.56%	0	0.00%	2	10.00%	6	3.49%	1	10.00%	18	4.19%
CAM	24	15.48%	1	12.50%	7	10.94%	1	100.00%	4	20.00%	32	18.60%	1	10.00%	70	16.28%
CAP	2	1.29%	0	0.00%	0	0.00%	0	0.00%	0	0.00%	1	0.58%	0	0.00%	3	0.70%
CUM	2	1.29%	1	12.50%	1	1.56%	0	0.00%	2	10.00%	7	4.07%	0	0.00%	13	3.02%
ESS	19	12.26%	0	0.00%	3	4.69%	0	0.00%	0	0.00%	30	17.44%	0	0.00%	52	12.09%
GLO	0	0.00%	0	0.00%	0	0.00%	0	0.00%	0	0.00%	1	0.58%	0	0.00%	1	0.23%
HUD	5	3.23%	0	0.00%	4	6.25%	0	0.00%	5	25.00%	8	4.65%	0	0.00%	22	5.12%
HUN	1	0.65%	0	0.00%	0	0.00%	0	0.00%	0	0.00%	0	0.00%	0	0.00%	1	0.23%
MER	17	10.97%	0	0.00%	4	6.25%	0	0.00%	0	0.00%	12	6.98%	1	10.00%	34	7.91%
MID	21	13.55%	2	25.00%	12	18.75%	0	0.00%	0	0.00%	20	11.63%	1	10.00%	56	13.02%
MON	3	1.94%	0	0.00%	4	6.25%	0	0.00%	0	0.00%	4	2.33%	0	0.00%	11	2.56%
MOR	2	1.29%	0	0.00%	0	0.00%	0	0.00%	0	0.00%	1	0.58%	0	0.00%	3	0.70%
OCE	2	1.29%	0	0.00%	4	6.25%	0	0.00%	1	5.00%	5	2.91%	0	0.00%	12	2.79%
PAS	25	16.13%	1	12.50%	16	25.00%	0	0.00%	3	15.00%	15	8.72%	4	40.00%	64	14.88%
SOM	0	0.00%	0	0.00%	0	0.00%	0	0.00%	0	0.00%	1	0.58%	0	0.00%	1	0.23%
SUS	0	0.00%	0	0.00%	0	0.00%	0	0.00%	0	0.00%	2	1.16%	0	0.00%	2	0.47%
UNI	15	9.68%	2	25.00%	2	3.13%	0	0.00%	2	10.00%	10	5.81%	1	10.00%	32	7.44%
OTHER	0	0.00%	0	0.00%	0	0.00%	0	0.00%	0	0.00%	7	4.07%	0	0.00%	7	1.63%
Total	155	100.00%	8	100.00%	64	100.00%	1	100.00%	20	100.00%	172	100.00%	10	100.00%	430	100.00%





Juvenile Demographics and Statistics

Current Grade	COMMITTED		WAIVED		PROBATIONER		Total
	MALE	FEMALE	MALE	FEMALE	MALE	FEMALE	
7	4 (2.58%)	0 0.00%	0 0.00%	0 0.00%	0 0.00%	0 0.00%	4 (1.61%)
8	3 (1.94%)	0 0.00%	0 0.00%	0 0.00%	1 (5.00%)	0 0.00%	4 (1.61%)
9	10 (6.45%)	1 (12.50%)	1 (1.56%)	0 0.00%	5 (25.00%)	0 0.00%	17 (6.85%)
10	32 (20.65%)	1 (12.50%)	8 (12.50%)	0 0.00%	4 (20.00%)	0 0.00%	45 (18.15%)
11	25 (16.13%)	1 (12.50%)	12 (18.75%)	0 0.00%	5 (25.00%)	0 0.00%	43 (17.34%)
12	30 (19.35%)	1 (12.50%)	15 (23.44%)	0 0.00%	3 (15.00%)	0 0.00%	49 (19.76%)
HSG	42 (27.10%)	3 (37.50%)	27 (42.19%)	1 (100.00%)	2 (10.00%)	0 0.00%	75 (30.24%)
GED	1 (0.65%)	0 0.00%	1 (1.56%)	0 0.00%	0 0.00%	0 0.00%	2 (0.81%)
Others **	8 (5.16%)	1 (12.50%)	0 0.00%	0 0.00%	0 0.00%	0 0.00%	9 (3.63%)
Total	155 (100.00%)	8 (100.00%)	64 (100.00%)	1 (100.00%)	20 (100.00%)	0 (0.00%)	248 (100.00%)

** Includes Aged Out Juveniles and Pending Records

Special Education Services

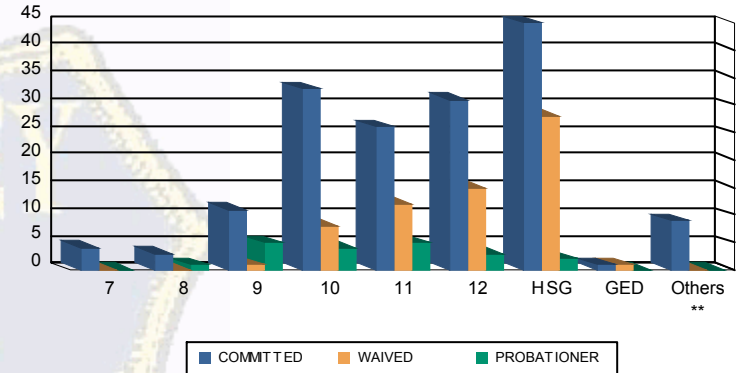
Yes	76 (49.03%)	3 (37.50%)	32 (50.00%)	1 (100.00%)	7 (35.00%)	0 0.00%	119 (47.98%)
No	78 (50.32%)	5 (62.50%)	32 (50.00%)	0 0.00%	13 (65.00%)	0 0.00%	128 (51.61%)
Pending	1 (0.65%)	0 0.00%	0 0.00%	0 0.00%	0 0.00%	0 0.00%	1 (0.40%)
Total	155 (100.00%)	8 (100.00%)	64 (100.00%)	1 (100.00%)	20 (100.00%)	0 (0.00%)	248 (100.00%)

Offense Categories

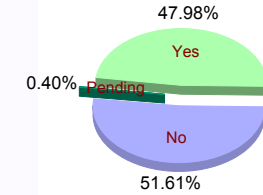
Drug	99 (8.76%)	6 (11.11%)	6 (5.26%)	0 0.00%	5 (9.80%)	0 0.00%	116 (8.59%)
Persons	316 (27.96%)	12 (22.22%)	64 (56.14%)	1 (100.00%)	16 (31.37%)	0 0.00%	409 (30.30%)
Property	191 (16.90%)	9 (16.67%)	8 (7.02%)	0 0.00%	6 (11.76%)	0 0.00%	214 (15.85%)
Public Order	151 (13.36%)	10 (18.52%)	8 (7.02%)	0 0.00%	7 (13.73%)	0 0.00%	176 (13.04%)
VOP	232 (20.53%)	10 (18.52%)	9 (7.89%)	0 0.00%	12 (23.53%)	0 0.00%	263 (19.48%)
Weapons	133 (11.77%)	7 (12.96%)	19 (16.67%)	0 0.00%	3 (5.88%)	0 0.00%	162 (12.00%)
Others Offenses	8 (0.71%)	0 0.00%	0 0.00%	0 0.00%	2 (3.92%)	0 0.00%	10 (0.74%)
Total *	1,130 (100.00%)	54 (100.00%)	114 (100.00%)	1 (100.00%)	51 (100.00%)	0 (0.00%)	1,350 (100.00%)

* Juveniles may have multiple offenses

Current Grade



Special Education



Offense Categories

