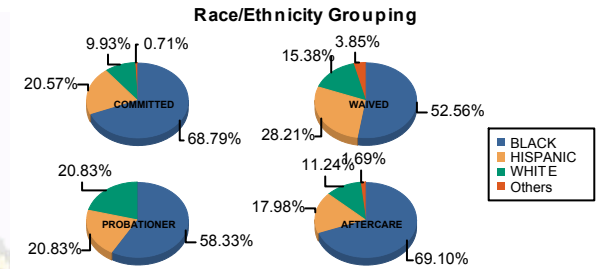




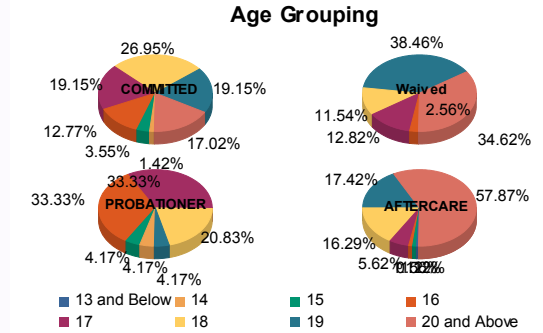
Juvenile Demographics and Statistics

Race/ Ethnicity	COMMITTED				WAIVED				PROBATIONER		AFTERCARE				Total	
	MALE	FEMALE	MALE	FEMALE	MALE	FEMALE	MALE	FEMALE	MALE	FEMALE	MALE	FEMALE	MALE	FEMALE		
BLACK	92	69.70%	5	55.56%	40	51.95%	1	100.00%	14	58.33%	118	69.82%	5	55.56%	275	65.32%
HISPANIC	27	20.45%	2	22.22%	22	28.57%	0	0.00%	5	20.83%	32	18.93%	0	0.00%	88	20.90%
WHITE	12	9.09%	2	22.22%	12	15.58%	0	0.00%	5	20.83%	16	9.47%	4	44.44%	51	12.11%
Others	1	0.76%	0	0.00%	3	3.90%	0	0.00%	0	0.00%	3	1.78%	0	0.00%	7	1.66%
Total	132	100.00%	9	100.00%	77	100.00%	1	100.00%	24	100.00%	169	100.00%	9	100.00%	421	100.00%



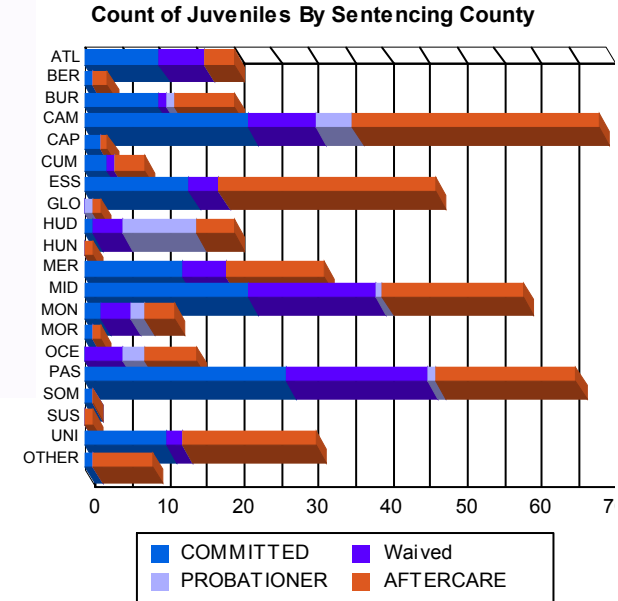
Age

Age Group	MALE	FEMALE	MALE	FEMALE	MALE	FEMALE	MALE	FEMALE	MALE	FEMALE	MALE	FEMALE	Total	Percentage
13 and Below	0	0.00%	0	0.00%	0	0.00%	0	0.00%	0	0.00%	1	0.59%	1	0.24%
14	2	1.52%	0	0.00%	0	0.00%	1	4.17%	0	0.00%	0	0.00%	3	0.71%
15	5	3.79%	0	0.00%	0	0.00%	1	4.17%	2	1.18%	0	0.00%	8	1.90%
16	14	10.61%	4	44.44%	2	2.60%	0	0.00%	8	33.33%	2	1.18%	30	7.13%
17	25	18.94%	2	22.22%	10	12.99%	0	0.00%	8	33.33%	10	5.92%	55	13.06%
18	37	28.03%	1	11.11%	9	11.69%	0	0.00%	5	20.83%	26	15.38%	81	19.24%
19	26	19.70%	1	11.11%	30	38.96%	0	0.00%	1	4.17%	31	18.34%	89	21.14%
20 and Above	23	17.42%	1	11.11%	26	33.77%	1	100.00%	0	0.00%	97	57.40%	6	66.67%
Total	132	100.00%	9	100.00%	77	100.00%	1	100.00%	24	100.00%	169	100.00%	9	100.00%



Sentencing County

County	MALE	FEMALE	MALE	FEMALE	MALE	FEMALE	MALE	FEMALE	MALE	FEMALE	MALE	FEMALE	Total	Percentage
ATL	10	7.58%	0	0.00%	6	7.79%	0	0.00%	0	0.00%	3	1.78%	1	11.11%
BER	1	0.76%	0	0.00%	0	0.00%	0	0.00%	0	0.00%	2	1.18%	0	0.00%
BUR	10	7.58%	0	0.00%	1	1.30%	0	0.00%	1	4.17%	7	4.14%	1	11.11%
CAM	19	14.39%	3	33.33%	8	10.39%	1	100.00%	5	20.83%	32	18.93%	1	11.11%
CAP	2	1.52%	0	0.00%	0	0.00%	0	0.00%	0	0.00%	1	0.59%	0	0.00%
CUM	3	2.27%	0	0.00%	1	1.30%	0	0.00%	0	0.00%	3	1.78%	1	11.11%
ESS	14	10.61%	0	0.00%	4	5.19%	0	0.00%	0	0.00%	29	17.16%	0	0.00%
GLO	0	0.00%	0	0.00%	0	0.00%	0	0.00%	1	4.17%	1	0.59%	0	0.00%
HUD	1	0.76%	0	0.00%	4	5.19%	0	0.00%	10	41.67%	5	2.96%	0	0.00%
HUN	0	0.00%	0	0.00%	0	0.00%	0	0.00%	0	0.00%	1	0.59%	0	0.00%
MER	12	9.09%	1	11.11%	6	7.79%	0	0.00%	0	0.00%	12	7.10%	1	11.11%
MID	19	14.39%	3	33.33%	17	22.08%	0	0.00%	1	4.17%	18	10.65%	1	11.11%
MON	2	1.52%	0	0.00%	4	5.19%	0	0.00%	2	8.33%	4	2.37%	0	0.00%
MOR	1	0.76%	0	0.00%	0	0.00%	0	0.00%	0	0.00%	1	0.59%	0	0.00%
OCE	0	0.00%	0	0.00%	5	6.49%	0	0.00%	3	12.50%	7	4.14%	0	0.00%
PAS	26	19.70%	1	11.11%	19	24.68%	0	0.00%	1	4.17%	18	10.65%	1	11.11%
SOM	1	0.76%	0	0.00%	0	0.00%	0	0.00%	0	0.00%	0	0.00%	0	0.00%
SUS	0	0.00%	0	0.00%	0	0.00%	0	0.00%	0	0.00%	1	0.59%	0	0.00%
UNI	10	7.58%	1	11.11%	2	2.60%	0	0.00%	0	0.00%	16	9.47%	2	22.22%
OTHER	1	0.76%	0	0.00%	0	0.00%	0	0.00%	0	0.00%	8	4.73%	0	0.00%
Total	132	100.00%	9	100.00%	77	100.00%	1	100.00%	24	100.00%	169	100.00%	9	100.00%





Juvenile Demographics and Statistics

Current Grade	COMMITTED		WAIVED		PROBATIONER		Total
	MALE	FEMALE	MALE	FEMALE	MALE	FEMALE	
8	4 (3.03%)	0 0.00%	0 0.00%	0 0.00%	1 (4.17%)		5 (2.06%)
9	12 (9.09%)	3 (33.33%)	0 0.00%	0 0.00%	8 (33.33%)		23 (9.47%)
10	21 (15.91%)	2 (22.22%)	6 (7.79%)	0 0.00%	6 (25.00%)		35 (14.40%)
11	31 (23.48%)	1 (11.11%)	11 (14.29%)	0 0.00%	7 (29.17%)		50 (20.58%)
12	14 (10.61%)	1 (11.11%)	19 (24.68%)	0 0.00%	2 (8.33%)		36 (14.81%)
HSG	47 (35.61%)	2 (22.22%)	38 (49.35%)	1 (100.00%)	0 0.00%		88 (36.21%)
GED	0 0.00%	0 0.00%	2 (2.60%)	0 0.00%	0 0.00%		2 (0.82%)
Others **	3 (2.27%)	0 0.00%	1 (1.30%)	0 0.00%	0 0.00%		4 (1.65%)
Total	132 (100.00%)	9 (100.00%)	77 (100.00%)	1 (100.00%)	24 (100.00%)		243 (100.00%)

** Includes Aged Out Juveniles and Pending Records

Special Education Services

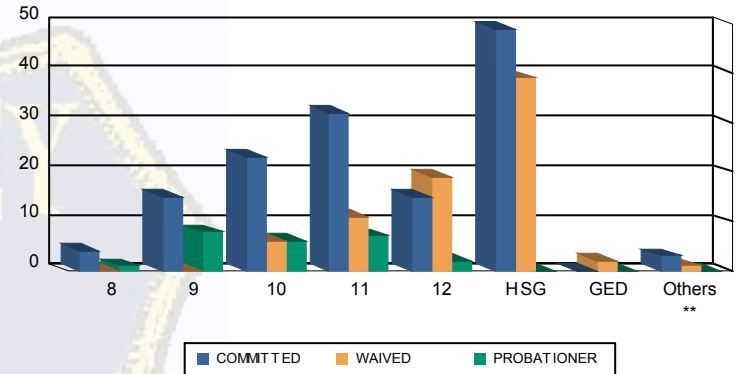
Yes	60 (45.45%)	7 (77.78%)	31 (40.26%)	1 (100.00%)	12 (50.00%)		111 (45.68%)
No	72 (54.55%)	2 (22.22%)	45 (58.44%)	0 0.00%	12 (50.00%)		131 (53.91%)
Pending	0 0.00%	0 0.00%	1 (1.30%)	0 0.00%	0 0.00%		1 (0.41%)
Total	132 (100.00%)	9 (100.00%)	77 (100.00%)	1 (100.00%)	24 (100.00%)		243 (100.00%)

Offense Categories

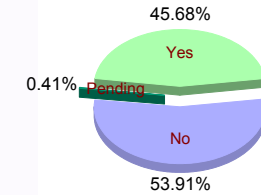
Drug	90 (8.29%)	7 (11.48%)	8 (5.63%)	0 0.00%	7 (12.50%)		112 (8.32%)
Persons	294 (27.07%)	13 (21.31%)	76 (53.52%)	1 (100.00%)	16 (28.57%)		400 (29.72%)
Property	179 (16.48%)	9 (14.75%)	11 (7.75%)	0 0.00%	6 (10.71%)		205 (15.23%)
Public Order	140 (12.89%)	9 (14.75%)	11 (7.75%)	0 0.00%	7 (12.50%)		167 (12.41%)
VOP	251 (23.11%)	15 (24.59%)	14 (9.86%)	0 0.00%	9 (16.07%)		289 (21.47%)
Weapons	125 (11.51%)	8 (13.11%)	22 (15.49%)	0 0.00%	10 (17.86%)		165 (12.26%)
Others Offenses	7 (0.64%)	0 0.00%	0 0.00%	0 0.00%	1 (1.79%)		8 (0.59%)
Total *	1,086 (100.00%)	61 (100.00%)	142 (100.00%)	1 (100.00%)	56 (100.00%)		1,346 (100.00%)

* Juveniles may have multiple offenses

Current Grade



Special Education



Offense Categories

